

Life Is On

**eliwell**<sup>TM</sup>  
by Schneider Electric

# Televis **Blue**

The Cloud Solution for Systems Monitoring



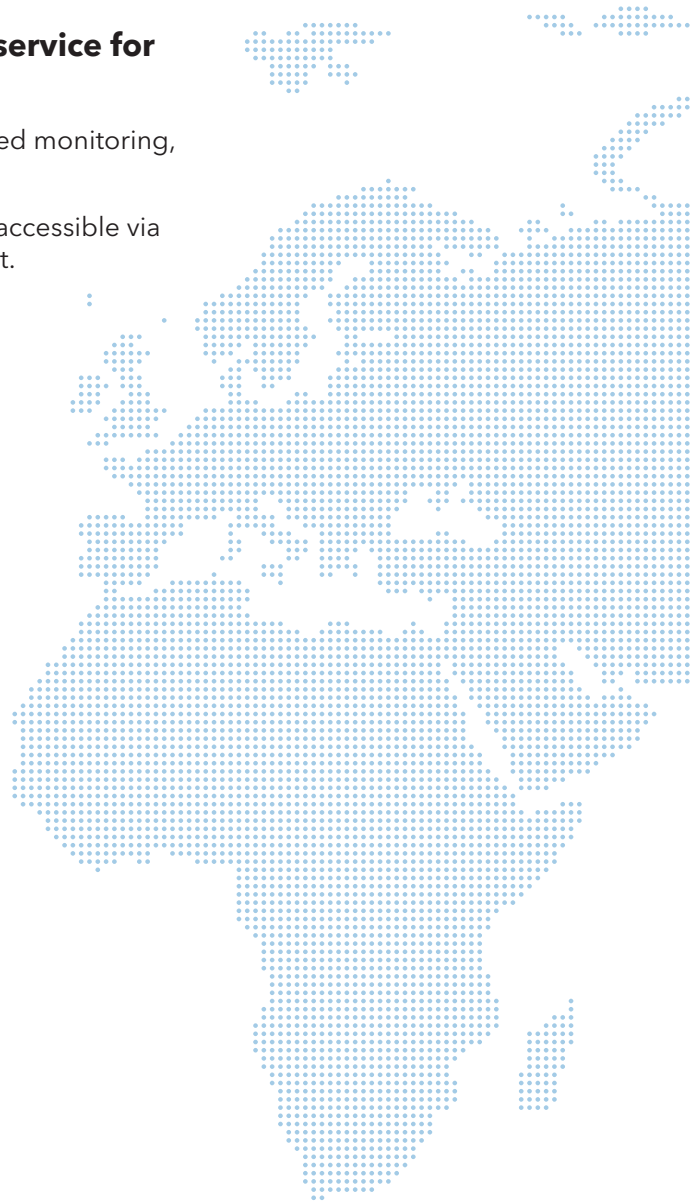
- › Web-based systems monitoring for tablets and smartphones
- › Access to all installations from a single point
- › Information easily accessible at all times
- › M2M connectivity included for over 30 countries

# TelevisBlue Cloud Service

## The first cloud-based plug and play monitoring service for refrigeration.

TelevisBlue is the innovative system for completely cloud-based monitoring, intended for small and medium-size systems.

TelevisBlue offers the power of cloud data collection service, accessible via the web, with simple, speedy installation via a pre-activated kit.



### The installation kit includes:

- RS485 connectivity for controllers in the field
- 2G cellular modem
- Pre-activated M2M SIM Card compatible with more operators in over 30 countries
- Dedicated, protected M2M data connection between the gateway and the cloud server
- 12 months of service for data collection and archiving and alarm management
- Notification and reporting via e-mail
- Web access to system configuration and data

## Main Functions

### Cellular connection included for data always online

TelevisBlue only uses its own protected M2M cellular data connection to transfer information between the system and the cloud without the need for any configuration by the user.

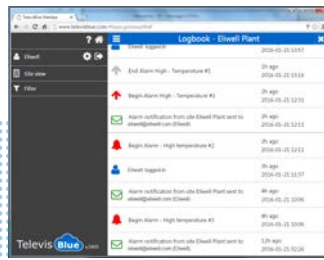
### Annual renewal of service

TelevisBlue, upon activation, collects and transfers information to the cloud for 12 months, renewable annually. If the license is cancelled, data remains available for an additional 12 months.

### System and features always up to date

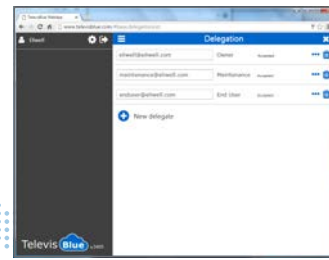
No application to download or update is required. Simply log into the [www.televisblue.com](http://www.televisblue.com) site to use its functions. Eliwell handles software updates, new feature releases, and updates to the online manual.

# Plug and Play Monitoring



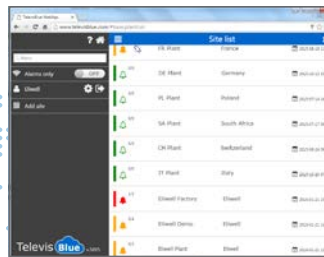
## Food quality constantly under control

The system constantly monitors temperatures and other data and notifies users when alert thresholds are exceeded. Alert thresholds can be easily set up via the web portal. TelevisBlue also offers immediate notification of all alarms detected by controllers in the field for speedy intervention in case of serious abnormalities.



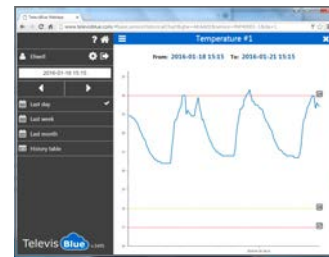
## Information Sharing and Collaboration

Centralized systems management allows owners and maintenance personnel to share information, meaning you can quickly modify the assignment directly from the TelevisBlue portal. The Reports function also enables periodic reports to be automatically sent to email recipients, keeping an archive of documents sent.



## Access to all systems from a single point

A single screen allows access to all managed systems with colourful icons highlighting urgent situations. Simple filters allow you to view systems currently in alarm status or systems belonging to the same chain.



## Information easily accessible at all times

TelevisBlue collects temperature and other operating data from equipment and stores it in the cloud, making them easily accessible with a web browser from your smartphone, tablet, or PC.

## TelevisBlue Starter License

Maximum number of resources  
Service included  
Recording interval  
Cloud synchronization interval  
Data Display

Alarm management

Alarm notifications  
PDF report sent  
Systems centralization  
Users and security

From 5 to 500 monitored resources depending on the model

12 months of connectivity and data recording service

Configurable from 5 minutes to 1 day

Configurable from 15 minutes to 1 day

From the HTML5 website [www.televisblue.com](http://www.televisblue.com)

- Time line of systems' events
- Data history for resources in table and graph format

2 predefined alarm categories

- Thresholds configurable on the cloud for all registered resources
- Optional mode for immediate notification when instrument alarms go off

Via e-mail, multiple recipients for each category

Via e-mail, configurable on a daily, weekly or monthly basis


Access page with summary statement for all managed systems

Administration of delegates for each installation

**IMPORTANT NOTICE: the use of the TelevisBlue product and service is subject to the acceptance of the terms of service on the site [www.televisblue.com/terms](http://www.televisblue.com/terms).** For more information on system characteristics, countries where the service is available, and connectible controllers, see the online manual and appendices at [www.televisblue.com/help](http://www.televisblue.com/help).

# Application Models and Technical Data

## Models

	Code	Description	Service Included	Resources
<b>Gateway</b>				
	<b>TBR2S011E0000</b>	TelevisBlue Starter 005-1Y 2G	12 months	5
	<b>TBR2S051E0000</b>	TelevisBlue Starter 025-1Y 2G		25
	<b>TBR2S101E0000</b>	TelevisBlue Starter 050-1Y 2G		50
	<b>TBR2S301E0000</b>	TelevisBlue Starter 150-1Y 2G		150
	<b>TBR2S501E0000</b>	TelevisBlue Starter 250-1Y 2G		250
	<b>TBR2S1H1E0000</b>	TelevisBlue Starter 500-1Y 2G		500
<b>Accessories</b>				
	<b>SAMANT3B30300</b>	ANTENNA 3B 3m CABLE MCX90/M FREQ.:900/1800/2100 MHZ		Optional external antenna
	<b>TBR2X0000GW00</b>	TelevisGate 2G		Only replacement device

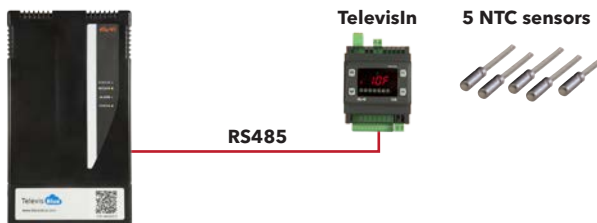
## Technical Data

Dimensions (WxHxD)	128 x 227 x 50 mm
Installation	Wall or panel
Power Supply	100-240 Vac
Connectivity	GSM/GPRS modem 850/900/1800/1900 MHz with integrated antenna
Field bus	Isolated RS-485
Memory	Buffer memory for 12 hours of data
Device status display	3 LED status   8A 30 Vac max SPDT Relay for status communication
Alarm signalling	1 LED status   8A 30 Vac max SPDT Relay

## Application examples

### Temperature monitoring in existing systems

#### TelevisBlue Starter 005-1Y 2G



- HACCP recordings of 5 temperatures for 12 months at 15 minute intervals
- Web-configurable notification of maintenance personnel when temperature threshold is exceeded
- Daily HACCP report in PDF format sent to owner

### Monitoring for a chain of restaurants

#### TelevisBlue Starter 025-1Y 2G



- Connection to controllers via RS-485
- Recordings for 12 months at 5 minute intervals:
  - HACCP of 5 temperatures
  - 5 evaporation/defrost temperatures
  - 10 resources available for future system expansion
- Reading and reporting of all connected controller alarms
- Notification of maintenance personnel when temperature threshold is exceeded
- HACCP report in PDF format sent daily to owner
- Complete HACCP report in PDF format sent weekly to maintenance personnel
- Centralized access to data of all restaurants with a single log-in

Follow us on  

[www.eliwell.com](http://www.eliwell.com)

### Eliwell Controls srl

Via dell'Industria, 15 Z.I. Paludi  
32010 Pieve d'Alpago (BL) - ITALY -  
T: +39 0437 986 111  
E: +39 0437 989 066

[www.eliwell.com](http://www.eliwell.com)

### Sales

T: +39 0437 986 100 (Italy)  
T: +39 0437 986 200 (other countries)  
E: saleseliwell@schneider-electric.com

### Technical Support

T: +39 0437 986 300  
E: Techsuppeliwell@schneider-electric.com



CT123294 • TelevisBlue • EN • rel.02/16

© Eliwell Controls s.r.l. 2016 • All rights reserved